

# **KODA**

## **USER'S MANUAL**



**iSwing**

Music and Video Docking station  
for iPods



iPod



iPod mini



iPod  
with  
color  
display



iPod nano



iPod  
with  
video

Please read the following instructions carefully before connecting, operating or adjusting this product.  
Please keep this manual in a convenient place for future reference.

# CONTENTS

Safety Warning .....	1
Operation Introduction .....	2
System Connection .....	3
System Operation .....	4
Using Remote Control .....	5
Troubleshooting .....	6
Specifications .....	7

## SAFETY WARNING



- The lightning flash with arrowhead symbol, within an equilateral triangle, alerts the user to the presence of un-insulated dangerous voltage within the system enclosure that may be of sufficient magnitude to constitute a risk of electric shock.
- The exclamation point with in an equilateral triangle alerts the user to the presence of important operating and maintenance instructions in this owner's guide.

Do not allow children to play with electrical devices when not under supervision. Children may not be aware of the presence of potential risks!

Install the cables in a safety way! Avoid tripping over them!

Do not expose the device to direct sunlight or place it near sources of heat!

Protect the cables and devices from dust, dirt and abrasive liquids!

The equipment and cables must not be splashed by water. Do not place any recipients containing (such as vases or beverages) onto or next to the devices!

No fire sources (such as candles) should be placed onto or next to the device!

The wall outlet must be within easy reach and next to the place of use. Only use the supplied power adapter. Do not place heavy objects on the cable or power supply. Position the cable so that it cannot obstruct or catch anyone. Always make sure there is sufficient ventilation of the power adapter.

Before stormy weather when there is the danger of lighting, disconnect the device from the power supply.

Never open the casing of the device, of the power adapter or other accessories: there are no serviceable parts! If the casing is opened, your life is in danger due to electric shock. Do not use the device if the casing is damaged. If this happens, it must first be examined by a technical expert. If you notice any smoke, unusual noise or strange smells, switch off the device immediately and pull the plug from the power supply. Contact customer service. It is very dangerous to continue using this device under these conditions. Disconnect the power supply immediately if liquid gets into the device and seek the help of customer service or a technical expert.

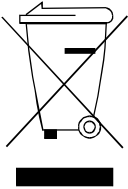
**Warning:** Do not expose batteries to heat or fire. Do not short-circuit the batteries, disassemble them or try to recharge them. They may explode and cause serious injury. Store batteries out of children's reach. If batteries are swallowed, there is the danger of choking or poisoning.

## CONFORMITY, DISPOSAL



### Conformity

This device has been tested for compliance with the basic and other relevant requirements of the EMC Directive 89/336/EEC and the Low Voltage Directive 72/23/EWG.



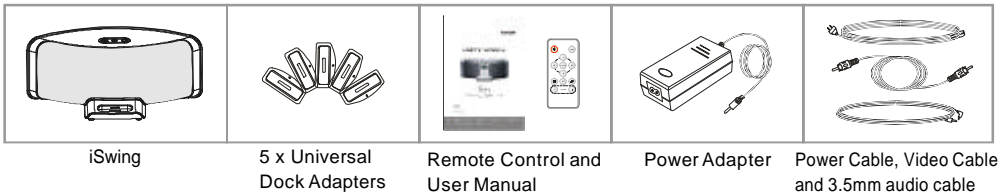
### Disposal

The European Directive 2002/96/EC applies to this product. All electric and electronic devices must be disposed of separately from household waste at established bodies. Avoid hazards to the environment and dangers to your personal health by disposing of the device properly. For further information about proper disposal, contact your local government, disposal bodies or the shop where you bought the device.

## OPERATION INTRODUCTION

Thanks for choosing the iSwing Music and Video Docking Station from KODA.

### Box Content



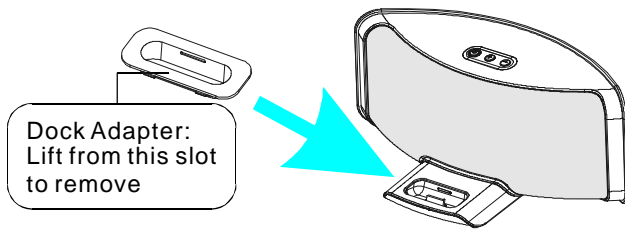
**Figure 1: What's included in the carton**

### Dock Adapter

Insert the Dock Adapter that fits your iPod model, then plug in your iPod. The adapter number is marked at the back or side of each dock adapter.

Adapter No.	iPod model
3	iPod mini (4GB and 6GB)
4	iPod (20GB and 30GB)
5	iPod (40GB)
6	iPod with color display (20GB/30GB)
7	iPod with color display (40GB and 60GB)

**Note:** The device does not support iPod shuffle or iPods with scroll wheels or touch wheels.



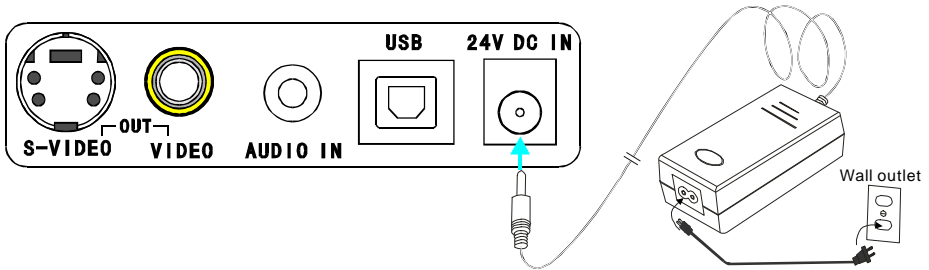
**Figure 2**

**Note:**

1. 10G/15G/20G (dock connector) models both thinner and thicker version are not provided.
2. iPod nano and Fifth generation iPod models dock adaptors are provided in your iPod shuffle, iPod (scroll wheel) and iPod (touch wheel) are not compatible with the Universal Dock. These models do not have dock connector port

## SYSTEM CONNECTION

After the iPod is docked, you can now follow the following steps to enjoy iSwing as a music and video docking station.



**Figure 3 iSwing rear connection terminal**

1. Plug the included power adapter into the back of iSwing DC in jack, and the other end into the wall outlet.
2. Plug the S-Video cable (not included) into the back of iSwing S-Video jack to view photos or videos on your TV. It is recommended for better picture quality.
3. Alternatively, you can choose to plug the RCA video cable (included) into the back of iSwing video jack to view photos or videos on your TV.
4. Use this audio in, with the included 3.5mm audio cable to connect other audio devices like MP3 and laptop, or iPod without a dock connector to enjoy music playback.
5. Use this USB jack with any standard A to B USB cable (not included) to sync with your computer + iTunes.

**Note:** Video Output connection is only applicable for iPod compatible with photo and video function.

**Note:** iPod nano does not support external playback of its internal photos, so video connection is not applicable to iPod nano.

## SYSTEM OPERATION

After power adapter is plugged in and iPod is docked, press POWER (Figure 4) to turn on the unit with LED lights up. The ⊕ and ⊖ buttons next to the ⏻ is the volume control of the system. Press and hold ⊕ or ⊖ to increase or decrease the volume.

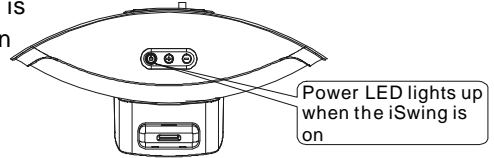


Figure 4

### Playing iPod Music

1. Place the iPod into the docking station port.
2. Press PLAY/ENTER on remote control to start enjoying music.

**Note:** Please refer p.5 for more remote options in iPod Music playback.

### Playing Music using the 3.5mm audio in

1. Connect your audio device via the included 3.5mm audio cable to the iSwing.
2. Press PLAY on your portable device to start music playback.

**Note:** Only POWER/VOL up down function key on remote control can be used for 3.5mm audio in.

**Note:** iSwing will choose 3.5mm audio input as the priority signal source to play, while 3.5mm signal source and iPod is docked into iPod at the same time.


**Note:** It is recommended to adjust your audio devices to a sufficiently loud level, then adjust the volume of the iSwing to your satisfactory level.

### Viewing Photos and Movie

1. For viewing photos and movie, you can connect via S-video or video output to your TV. For better quality, it is recommended to use S-video output.
2. After the device is connected, Turn on your TV; selecting the correct input signal.
3. Set your iPod in TV OUT before viewing photos and movie.
4. To view photos on your TV, enter Photo Library, and press ENTER button on your iPod or your remote twice.
5. To view movie on your TV, enter Movie Album, and press ENTER button on your iPod or remote control to enjoy.

**Note:** Unit is only for movie or photo (slide show) viewing and not for showing the status of the thumbnail preview of photos.

### Charging and Synchronizing the iPod on your Computer

1. Turn on your computer and install the latest iPod + iTunes software.
2. Connect the USB port of the computer to the USB port of the iSwing with a standard USB cable (not included).
3. Place the iPod in the iSwing to start charge and sync with your computer.
4. To disconnect, double click the Remove Hardware icon  in the Windows task bar. Then "Unplug or Eject Hardware" screen displays.

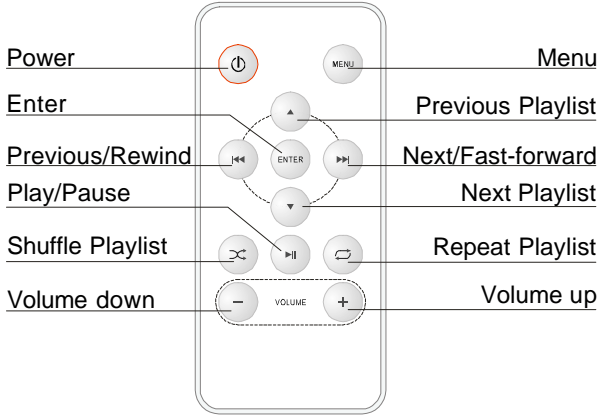
5. Select the docking station and click Stop. Then click OK. When "The USB Mass Storage Device can now be safely removed from the system" appears, click OK.

**Warning:** Please do not remove the iPod from iSwing while synchronizing the files. You must disconnect your iPod from the computer operating system before disconnecting from your docking station.

**Note:** Once your iPod is docked, power is recharged automatically until it is fully charged. To turn off the system totally, please remove iPod from the docking station, unplug the system from the power supply.

## USING REMOTE CONTROL

You can use the remote to control the playback of your iPod.

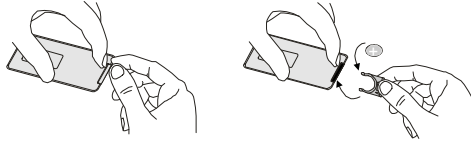


Power	Turn on/off the iSwing & iPod.
Menu	Press to go back to the Previous Menu.
Enter	Press to choose a menu item. Press to start the video & photos.
Next Playlist	Press Menu, Press NEXT PLAYLIST to skip, Press ENTER to confirm.
Previous Playlist	Press Menu, Press PREVIOUS PLAYLIST to skip, Press ENTER to confirm.
Shuffle Songs	Press to have song shuffle or album shuffle. Press again to cancel.
Repeat	Press to have song repeat; Press again to have the song album repeat. Press again to cancel.
Play or pause (▶  )	Press to play; press again to pause.
Next/Fast-forward (▶▶)	Press to skip to the next song or video. Press and hold to Fast-forward song.(video is not applicable)
Previous/Rewind(◀◀)	Press to skip to the previous song or video. Press and hold to Rewind song.(video is not applicable)
Volume Up/Down	Press to control iSwing volume.(iPod volume is not controlled)

# Replacing remote control battery

Replace the battery when it stops working, or the control range is minimized. Recommended to use a Lithium Cell CR2025, Duracell, Eveready, Energizer, Maxell, Toshiba, or Shun Wo Cr2032 3-volt lithium battery. To replace, please follow the Figure 5.

Please note that the lighting of the room or battery life can affect the operating range of the remote control.



**Figure 5: Inserting a new battery**

## TROUBLESHOOTING

In case of malfunction, please power off the system immediately and check the unit according to following table. If the problem still exists, please contact the dealer or the manufacturer.

Symptom	Problem	Solution
iPod / Audio source is not responding	iPod does not dock properly	<ul style="list-style-type: none"> <li>- Please ensure proper adapter is placed for your iPod.</li> <li>- Unplug the iPod from the docking station to see any obstructions in the connector or in your iPod.</li> </ul>
	The cable and DC adaptor are not connected and plugged	<ul style="list-style-type: none"> <li>- Make sure the cable and DC adaptor are firmly and correctly connected and plugged.</li> </ul>
No Sound	Power cable is not connected	<ul style="list-style-type: none"> <li>- Make sure your iPod is correctly docked in the iSwing music system.</li> </ul>
	Volume Level too low	<ul style="list-style-type: none"> <li>- Press "Volume" button on the panel or Remote Control to adjust.</li> </ul>
	iPod is not playing	<ul style="list-style-type: none"> <li>- Make sure your iPod or audio device is on, and a track is selected for playback.</li> </ul>
	iPod software compatibility problem	<ul style="list-style-type: none"> <li>- Make sure your iPod is running with the most updated Apple software.</li> </ul>
	After quickly undocking or docking your iPod	<ul style="list-style-type: none"> <li>- Remove your iPod from the dock, wait for 5 seconds, and return it to the dock.</li> <li>- Unplug the power cable for 1 minute, then plug it back to reset the system.</li> </ul>
Remote Control is not functioning properly	iPod does not dock properly.	<ul style="list-style-type: none"> <li>- Remove your iPod from the dock, wait briefly, then reseat it. You may need to do this for few times.</li> </ul>
	Remote Control is not pointed toward the infra-red window	<ul style="list-style-type: none"> <li>- Try the remote from different locations, and see if it works. Strong lighting or other room conditions may cause the problem.</li> <li>- Make sure nothing blocks the infrared (IR) signal path between the remote and your iSwing.</li> <li>- Wipe off the small red lens on the front end of the remote.</li> </ul>

Symptom	Problem	Solution
Remote Control is not functioning properly	Low batteries	<ul style="list-style-type: none"> <li>- Check the remote control battery to make sure the + side is facing up as shown in Figure 5 on page 6.</li> <li>- Replace the remote control battery when low level.</li> </ul>
Sound distortion	Volume level too high	- Press "Volume -" button to decrease the volume.
	Sound source is distorted	- Distortion and noise are easily noticed with high-powered speakers when playing poor quality audio source, esp. WAV and MID files. Try a different audio source such as a music CD or change better quality audio player.
System is not Responding	Mal-operation	<ul style="list-style-type: none"> <li>- Unplug the power cable. After 1 min, plug it again to reset the system.</li> <li>- Please contact customer service about this problem.</li> </ul>
Cannot start slideshow with remote control	Mal-use	<ul style="list-style-type: none"> <li>- You must use the iPod controls to start a sildeshow .</li> <li>- After you start a slideshow , you can control it with your remote control.</li> </ul>

**Note:** Plug the iPod into the docking station, the docking station will recharge its battery until he battery is full. To turn off the system of iSwing completely, please remove the iPod from the docking station and disconnect the power supply of the system.

## SPECIFICATIONS

Power output	15W × 2 (4 )
Signal to Noise Ratio	80dB
Frequency Response	60Hz ~ 20kHz
Speaker Units	3" × 2
Power adapter input	100-240VAC , 47-63Hz
Power adapter output	24VDC , 1A
USB-A	Standard universal serial bus
Remote control battery	3V(type CR2025 or equivalent)
Product dimension (HWD)	140 × 355 × 174 mm
Net Weight	1.125Kg

### Notes:

- 1) The specifications listed above are for reference only.
- 2) The technical specifications of this device are subject to changes without prior notice.

